



pebble

Universe  
on your  
wrist.**POLAR GRIT**

BT CALLING SMARTWATCH

**Un-boxing the device**

- Pebble Polar Grit Smartwatch
- Magnetic Charger
- Warranty Card

**Specifications**

Model Name Pebble Polar Grit

Model No. PFB23

Standby Time Up to 15 Days

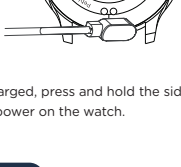
Charging Type Magnetic Charging

Screen Size 3.50 cm(1.38")

Bluetooth V5.0

**Charging**

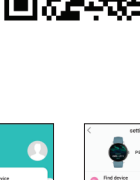
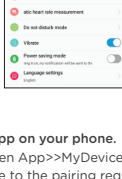
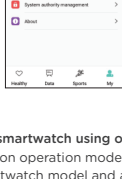
Fully charge the device (can take up to 3 hours) before using for the first time. To charge your device, plug the charging cable into the power adapter or USB port on your Device.



When fully charged, press and hold the side button for 3 seconds to power on the watch.

**App Download**

Open the watch app download interface, use the scan function to download, or scan the QR code attached to download from the Play Store/App Store

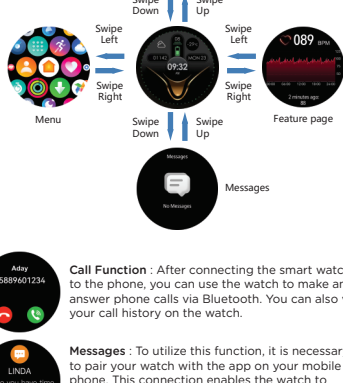
**Connect**

Pair the smartwatch using our app on your phone.

Connection operation mode: Open App>>MyDevice>>Select the Smartwatch model and agree to the pairing request, then the connection is successful.

**Firmware Upgrade**

The app will notify you of a new firmware version. Open the app interface and select Firmware Upgrade.

**Features**

**Call Function :** After connecting the smart watch to the phone, you can use the watch to make and answer phone calls via Bluetooth. You can also view your call history on the watch.



**Messages :** To utilize this function, it is necessary to pair your watch with the app on your mobile phone. This connection enables the watch to access and view third-party program messages through the message notification settings.



**Sleep :** If you wear the Smart Watch while sleeping, it can provide sleep duration and quality statistics.

**NOTE:** Sleep stats are reset to zero at 8:00 pm.



**Heart Rate :** When wearing the watch, it's best to position it above the wrist bone. From there, you can monitor your real-time heart rate. The normal range for the average person is 60-90 beats per minute. To measure your heart rate, click "start" on the heart rate interface. After approximately 20-30 seconds, the measurement will be taken. The detection will automatically stop after 60 seconds, and the displayed value will be your heart rate at the time of detection.



**Sports :** You can monitor your exercise during various sports activities



**Music Control :** Slide up on the main interface to enter the main menu, and click Music Control. It includes switching to the previous song/pause or play/ switching to the next song. You can click based on your own needs.

**Safety Instructions**

1. Although the Smartwatch can detect the real-time dynamic heart rate, it cannot be used for any medical purpose.
2. Do not place the equipment and its accessories in the area with too high or too low temperature, otherwise it may cause equipment failure, fire or explosion.
3. Avoid strong impact or vibration on the product to avoid damaging the equipment and its accessories and causing equipment failure.
4. Do not disassemble or modify the equipment and accessories without authorization. In case of equipment failure, please contact after-sales service.
5. If the equipment is not used for a long time, be sure to make up the power every three months.

Thank You

Hi There,

Thank you for choosing **Pebble!**You are now the proud owner of **Pebble Polar Grit Smartwatch**.

You can do a lot more with it, you have a Universe on you wrist.

This **Pebble Polar Grit** is a genuine high-quality **Pebble** product that comes with **1 Year Warranty**.**For Availing Warranty**

Contact us at- <https://support.pebblecart.com/support/tickets/new> and Service Centres near you.

Call on +91 8800271651 or email at [support@pebblecart.com](mailto:support@pebblecart.com)



Scan & register your product for 1 Year Warranty